

HITACHI

Telescopic Crawler Crane

TEST CERTIFICATES

17th February 2023

- **LOLER – Report of Thorough Examination of Lifting Equipment**
- **EC Declaration of Conformity – CE Cert**
- **Wire Rope Certificate EN10204**
- **Crane Specification Sheets**

RIVERTEK SERVICES (UK) LTD

Unit 5, Zone 3 Burntwood Business Park, Burntwood, Cannock, Staffs WS7 3FU
Tel: 01543 685 161

REPORT OF THOROUGH EXAMINATION OF LIFTING EQUIPMENT

As required by The Lifting Operations and Lifting Equipment Regulations 1998
Regulation 9 section 3a(ii) - Provision and Use of Work Equipment Regulations 1998

1 Owner / User: RIVERTEK SERVICES (UK) LTD		Contract No: GB3688
2 Address: Unit 5, Zone 3 Burntwood Business Park, Burntwood, Cannock, Staffs WS7 3FU		Inspection No: 70656
3 Item Description: Diesel/Hydraulic Crawler Crane Make & Model: HITACHI ZX135UST		Serial Number: HCMISS00L00077361 Fleet Number: ZX135UST Year of Supply: 2008
4 Safe Working Load: <i>Subject to test certificate and mobile plant working on firm level ground</i>	Load: 4.9 tonne maximum	Fly Jib Length / Height: N/A
	Radii : 2.5 min, 15.7m max.	
5 Test Certificate Details: REPORT OF THOROUGH EXAMINATION		
6 a) Is this the first examination following installation or after assembly at a new site or in a new location ?		N/A <i>Note: if this is the first examination, then this certificate must be retained in accordance with Regulation 11 (2) of LOLER 1998 as applicable</i>
b) Were examinations in accordance with a written scheme ?		No
7 Repairs required to enable safe operation <i>(If no repairs, enter "None")</i>		
a) Defects found which give rise to imminent danger and require immediate attention.		a) None. (Parts not inspected - Enclosed Parts)
b) Defects found which could, in time, give rise to danger, and which require attention within a specified time period.		b) None. (Parts not inspected - Enclosed Parts)
8 Other defects and remarks.		
None. (Parts not inspected - Enclosed Parts)		
<i>Note: if the item is used to lift persons it requires a thorough examination at 6 monthly intervals</i>		

Date of Last Examination: N/A
Date of This Examination: 17/02/23
Date of Next Examination: 17/02/24

This is to certify that on the date of examination the item described above was thoroughly examined and unless otherwise indicated the equipment has been installed correctly and is safe to operate.

Signature:  Date: 17/02/23

Inspection Supervisor: C. Cleary

Please see over for Notes on Requirements of Lifting Operations and Lifting Equipment Regulations 1998 and Provision and Use of Work Equipment Regulations 1998

EC MACHINERY DIRECTIVE

2006/42/EC

DECLARATION OF CONFORMITY

We hereby certify that the Machinery stipulated below complies with all relevant provisions of the Machinery Directive and the National Laws & Regulations adopting this Directive.

MACHINE DESCRIPTION: TELESCOPIC CRAWLER CRANE

MAKE: HITACHI **MODEL:** ZX135UST

SERIAL NUMBER: HCM1SS00L00077361

NAME OF SUPPLIER : Avondale Engineering Ltd
ADDRESS : Coolowen, Blarney, Co. Cork; Ireland


Harmonized Standards applied.

EN ISO 12100:2010

EN ISO 13857

EN 349:1993 +A1 2008

Signed:

 B.E.M.I.E.I.

Date: 18th November 2008

Name: JAMES WILLIAMS B.E. M.I.E.I. (Chartered Engineer)

Position: Technical Director

(Modifications to the machine without prior approval from the above signed will render this declaration null and void)

EC Declaration of Conformity

According to Machinery Directive 2006/42/EC in the presently valid edition

**PFEIFER
DRAKO**

PFEIFER DRAKO Ltd.
Marshfield Bank, Woolstarwood
GB-Crewe, CW2 8UY

Declaration of compliance 2.1
acc. to EN 10204

Certificate Number

274732-1

We PFEIFER DRAKO Ltd. hereby declare that the following machinery fulfils all of the relevant requirements of EC Machinery Directive 2006/42/EC. We hereby also certify that the described material has been verified and complies with the terms to the order contract.

Order no.	274732
WO no.	-
Quantity	1

Customer	RIVERTEK SERVICES LTD, Coolowen, Blarney, Cork, IE-T23 Ireland,		
Customer order number	verbal		
Ident number	- Demand: 1662409		
Part number	210525	Batch number	-
Description	Rope	Construction	P503
Nominal diameter [mm]	10.00	Length [m]	160,000
Surface of wire	B	Rope grade	2160
Lay	zZ	Weight [kg/m]	0,451
Min. breaking force [kN] ¹⁾	84,90	Working load limit [kN] ^{1) 2)}	16,98
Components part list / Termination ³⁾	-		

- 1) The given strength does not include rope terminations like: swagings, splices and connectors like hooks, open spelter sockets and so on.
2) The working load limit applies to the working coefficient = 5 (safety factor), unless otherwise specified in valid standards.
3) If not specified, ropes are supplied plain cut or fused and tapered.

Rope Category Number (RCN) according to ISO4309: 23-2

The following harmonised standards were used:

EN ISO 12100-1 Safety of machinery - Basic concepts, general principles for design
EN 12385-1/-2/-3/-4 Steel wire ropes - Safety
EN 10264-1/-2/-4 Steel wire and wire products - Steel wire for ropes
EN 13411 Terminations for steel wire ropes - Safety

The following other technical standards and specifications were used:

ISO 4309 Wire ropes - Care and maintenance, inspection and discard
PSH TL 21-52 Standardized Wire Ropes according EN 12385-4
PSH TL 21-54 Special Wire Ropes similar to EN 12385-4

This declaration loses its validity in case of any changes of the product not agreed upon with the manufacturer and also in case of non-attention of the security notes of the Pfeifer original operating manual "Stranded ropes for general lifting applications according to EN 12385-4", the standards EN 12385-3 "Steel wire ropes - Safety - Part 3: Information for use and maintenance" and ISO 4309 "Cranes - Wire ropes - Care, maintenance, installation, examination and discard".

Crewe, 28.02.2023



Luke Ralphs
Authorized Person for Technical Documentation



Wayne Shaw
Inspection Representative

CE



Zaxis135UST

A P P L I C A T I O N

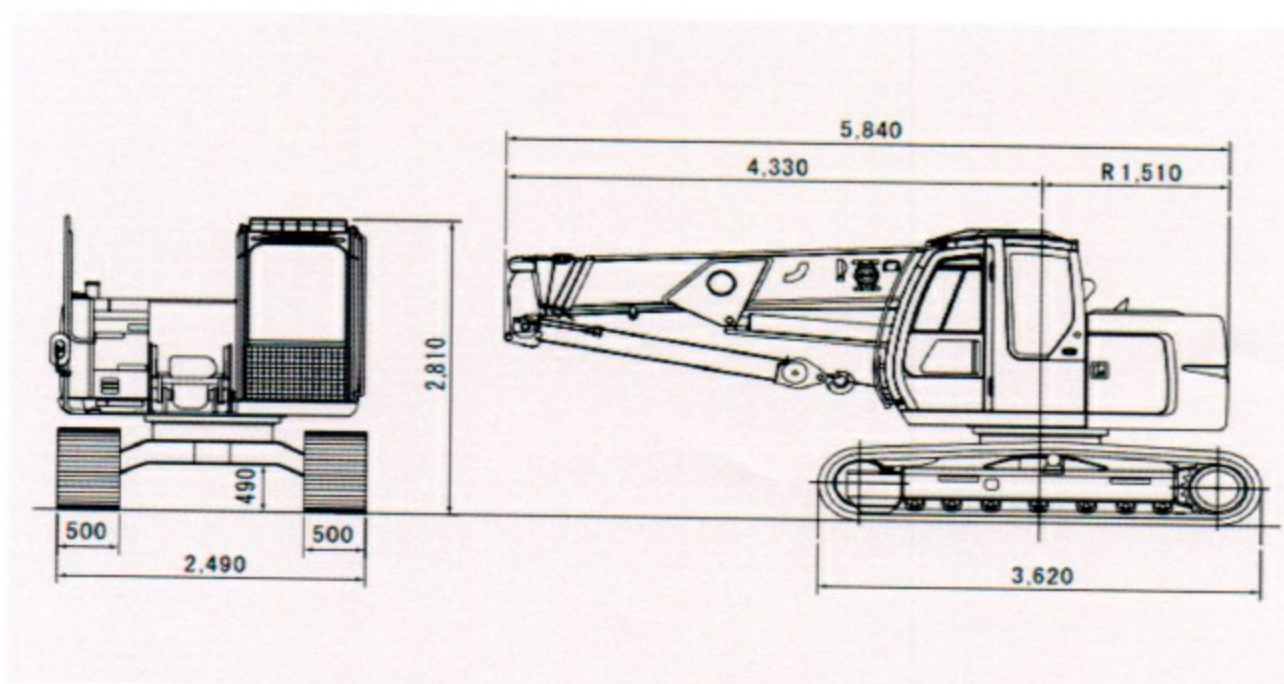


Model Code:
ZX135U ST
Engine Rated Power:
63 kW
Operating weight:
14 700 kg
Max. Lifting capacity:
4900 kg
Rated total load x Working radius:
4.9 tons x 3.1 m

Gross Rated Capacity (4 reeving)

Unit: kg

Working radius (m)	Boom length (m)							
	4.4		7.3		10.2		13	15.9
	static lift	travelling lift	static lift	travelling lift	static lift	travelling lift	static lift	static lift
2.50	4,900	2,000	4,900	2,000				
3.10	4,900	2,000	4,900	2,000	3,000	1,500		
3.50	4,400	2,000	4,440	2,000	3,000	1,500	3,000	
3.85	4,000	2,000	4,000	2,000	3,000	1,500	3,000	
4.00	3,820	1,910	3,820	1,910	3,000	1,500	3,000	2,600
4.20	3,580	1,790	3,580	1,790	3,000	1,500	3,000	2,600
4.50			3,220	1,610	3,000	1,500	3,000	2,600
5.00			2,730	1,365	2,700	1,350	2,600	2,600
5.15			5.31mx2,500	5.31mx1,250	5.33mx2,500	5.33mx1,250	2,500	2,500
5.50			2,380	1,190	2,400	1,200	2,270	2,270
6.00			2,070	1,035	2,110	1,055	2,000	2,000
6.50			1,810	905	1,860	930	1,820	1,800
7.10			1,580	790	1,630	815	1,670	1,620
7.50					1,500	750	1,560	1,520
8.00					1,350	675	1,430	1,400
8.50					1,220	610	1,300	1,300
9.00					1,110	555	1,200	1,200
10.00					920	460	1,000	1,000
11.00							850	890
12.00							730	770
12.80								680
13.00								670
14.00								580
15.00								500
15.70								450



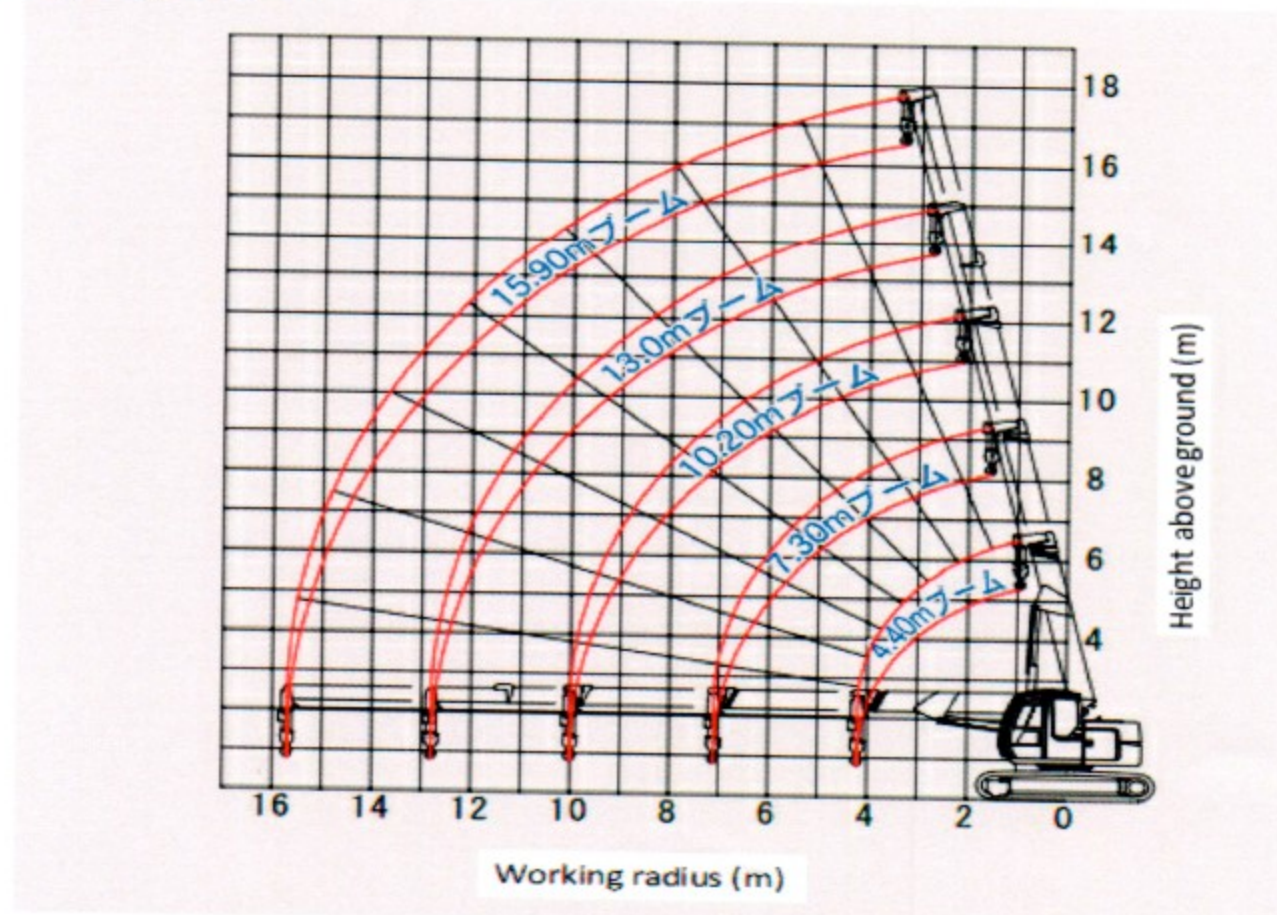
Notes: 1 The rated loads are determined according to EN 13000 rating on the condition that the machine is stationed on firm, level ground.

2) The load to be actually lifted is the listed total load minus lifting fittings such as hook (hook 4,9 ton; weight 55kg)

Specifications

		ZX135UST Grouser shoe
Operating Weight kg		14700
Max. lifting load X working radius		4.9 x 3.1
Max. hook lift above ground level m		36.0
Boom length m		4.36 - 15.92
Boom hoist angle degree		-3° ~ 78°
Boom hoisting speed s		13.0 (-3° ~ 78°)
Boom extending speed m/s		11.5 / 24.0
Hoisting rope speed m/min		High 100 / Low 64
Hoisting rope mm/m		10 x 160
Swing speed (rpm)	min	2.5 (2.5)
Travel speed km/h		3.0
Engine		
Model		Isuzu CC-4BG1TC
Rated Output		63/1,950 (85/1950)

Working Range Diagram



Note: The working ranges shown are determined with the machine under no-load condition, excluding jib deflection. In crane operation with lifted load, job angle range is restricted to 0° to 80°

These specifications are subject to change without notice.
 Illustrations and photos show the standard models, and may or may not include optional equipment, accessories, and all standard equipment with some differences in color and features.
 Before use, read and understand the Operator's Manual for proper operation.