

Programmed Oil Sampling

CLIENT NAME
HAZELL BROS LUND
CLIENT ADDRESS
9 Bee Court
Burleigh QLD 4220

MAKE Volvo
MODEL A30E
SERIAL NO. VCEA30EE00012624
UNIT NO. IME845
COMPARTMENT TYPE Transmission
COMPARTMENT NAM Transmission
MACHINE LOCATION Brisbane Port.
SYSTEM CAPACITY 44.0 Ltrs

CURRENT SAMPLE STATUS Normal

UIN : 02E98F3

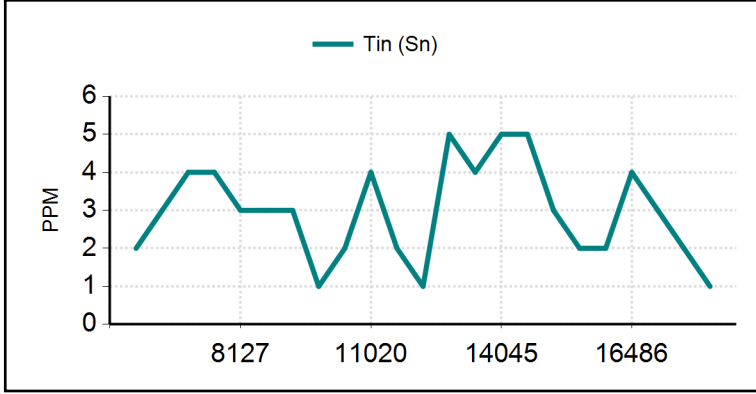
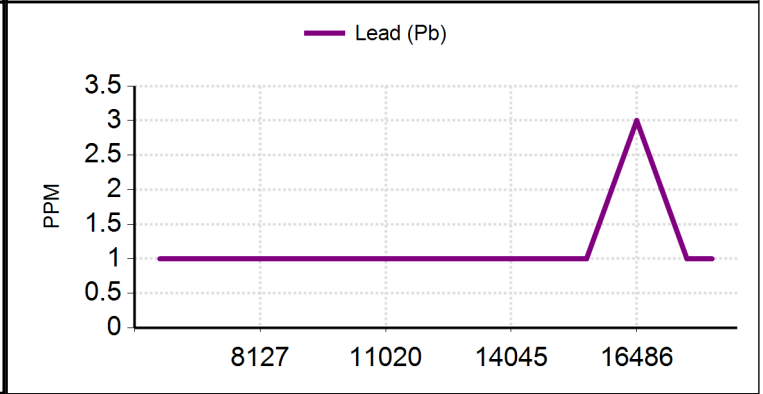
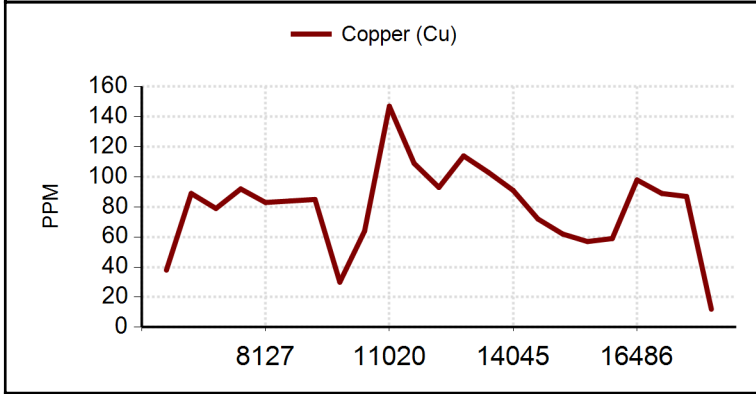
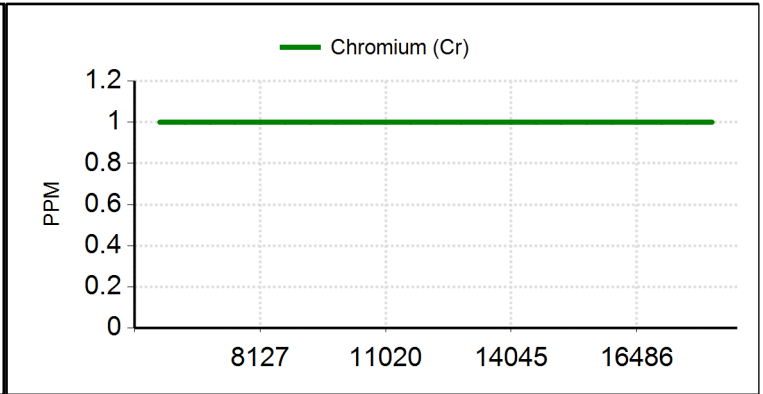
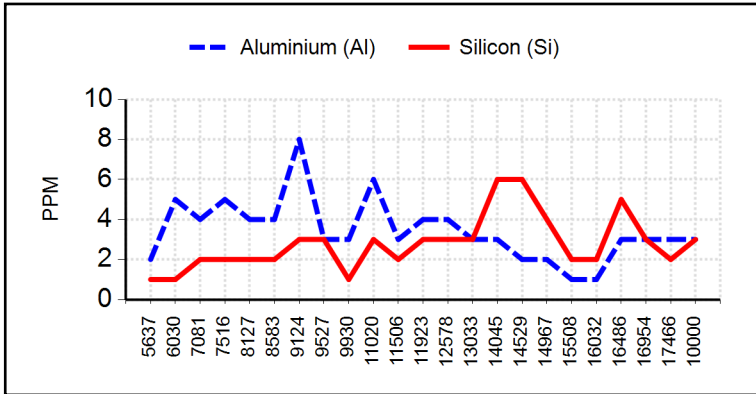
	CURRENT	2	3	4	5
SAMPLE NO.	46491761	42698686	41757432	40752505	29820745
SAMPLED DATE	09-Aug-23	19-Aug-21	15-Dec-20	02-Apr-20	15-Nov-19
DATE RECEIVED	14-Aug-23	25-Aug-21	21-Dec-20	06-Apr-20	25-Nov-19
OIL MAKE	Fluidematic Syn Dex III	ATF III	ATF	See Comments	See Comments
OIL GRADE	-	-	Unknown	-	-
MACHINE	Hrs 10000	17466	16954	16486	16032
COMPONENT	Hrs 10000	17466	16954	16486	16032
OIL	Hrs 50	466	454	486	500
OIL ADDED	Ltrs 0.0				
FILTER	Hrs	466	454	486	500
OIL CHANGED	Not Changed	Changed	Changed	Changed	Changed
WORK ORDER					
Metals (ppm)					
Aluminium (Al)	3	3	3	3	1
Copper (Cu)	12	87	89	98	59
Chromium (Cr)	<1	<1	<1	<1	<1
Iron (Fe)	3	17	11	9	5
Lead (Pb)	<1	1	2	3	2
Tin (Sn)	1	2	3	4	2
Contaminants (ppm)					
Silicon (Si)	3	2	3	5	2
Boron (B)	128	96	153	73	73
Sodium (Na)	1	1	<1	2	1
Potassium (K)	<1	1	2	1	1
Phosphorus (P)	285	181	224	254	207
Molybdenum (Mo)	1	<1	<1	<1	<1
Magnesium (Mg)	3	<1	<1	<1	1
Calcium (Ca)	104	65	84	82	76
Zinc (Zn)	10	11	25	55	6
Physical Tests					
Water (%) (FTIR)	<0.1	<0.1	<0.1	<0.1	<0.1
PQ Index	12	13	13	11	10
Viscosity (cSt,40°C)	31	28	29	32	28
Oxidation (Abs) (FTIR)	9.0	7.9	9.7	9.7	12.5

DIAGNOSIS

All wear rates normal. Abrasive and other contaminant levels are acceptable. Viscosity within specified operating range. Action: Resample next recommended service interval to further monitor.

GRAPHICAL WEAR TREND DATA

UIN:02E98F3



Filter Image

Filter patch test is not performed Contact laboratory for more information

"This analysis report is dependent upon the accurate completion of the sample submission sheet and correct sampling techniques as advised. The analysis is intended as an aid only in predicting mechanical wear and should not be regarded as a substitute for proper servicing or mechanical inspection. The company does not accept any liability whatsoever in respect of any loss or damage (including loss of profits, economic or other consequential loss or damage) however caused which may arise directly, or indirectly, as a result of the matters referred to in this analysis report."



CJD Equipment Pty Ltd ABN 63 008 754 523

Head Office

Perth 54 Great Eastern Highway, Guildford WA 6055
 Ph (08) 9478 0000 FAX (08) 9477 6351
 Email enquiries@cjd.com.au Web www.cjd.com.au

Laboratory Sites:

Brisbane: 26 Shand Street Stafford Qld 4053

Ph: (07) 3326 6300 Fax: (07) 3326 6321

Perth: 109 Bannister Road, Canning Vale, WA 6155

Ph: (08) 9232 0400 Fax: (08) 9232 0499

Sydney: Unit 2/171-175 Newton Rd Wetherill Park NSW 2164

Ph: (02) 8786 3150 Fax: (02) 9725 5071

Singapore 121 Genting Lane #04-01 ALS Building
 Singapore 349572

Ph 65 6589 0118 Fax 65 6283 9699

New Zealand 74 Seaview Road, Lower Hutt, Wellington, NZ
 5010

Ph: (64) 04 586 6202 Fax: (64) 04 586 6262

Hazell Bros Lund
 Attn: Steve Wilson
 Po Box 2135
 BURLEIGH BC QLD 4220

Programmed Oil Sampling

CLIENT NAME
HAZELL BROS LUND
CLIENT ADDRESS
9 Bee Court
Burleigh QLD 4220

MAKE Volvo
MODEL A30E
SERIAL No. VCEA30EE00012624
UNIT No. IME845
COMPARTMENT TYPE Diesel Engine
COMPARTMENT NAME Diesel Engine
MACHINE LOCATION Brisbane Port.
SYSTEM CAPACITY 40.0 Ltrs

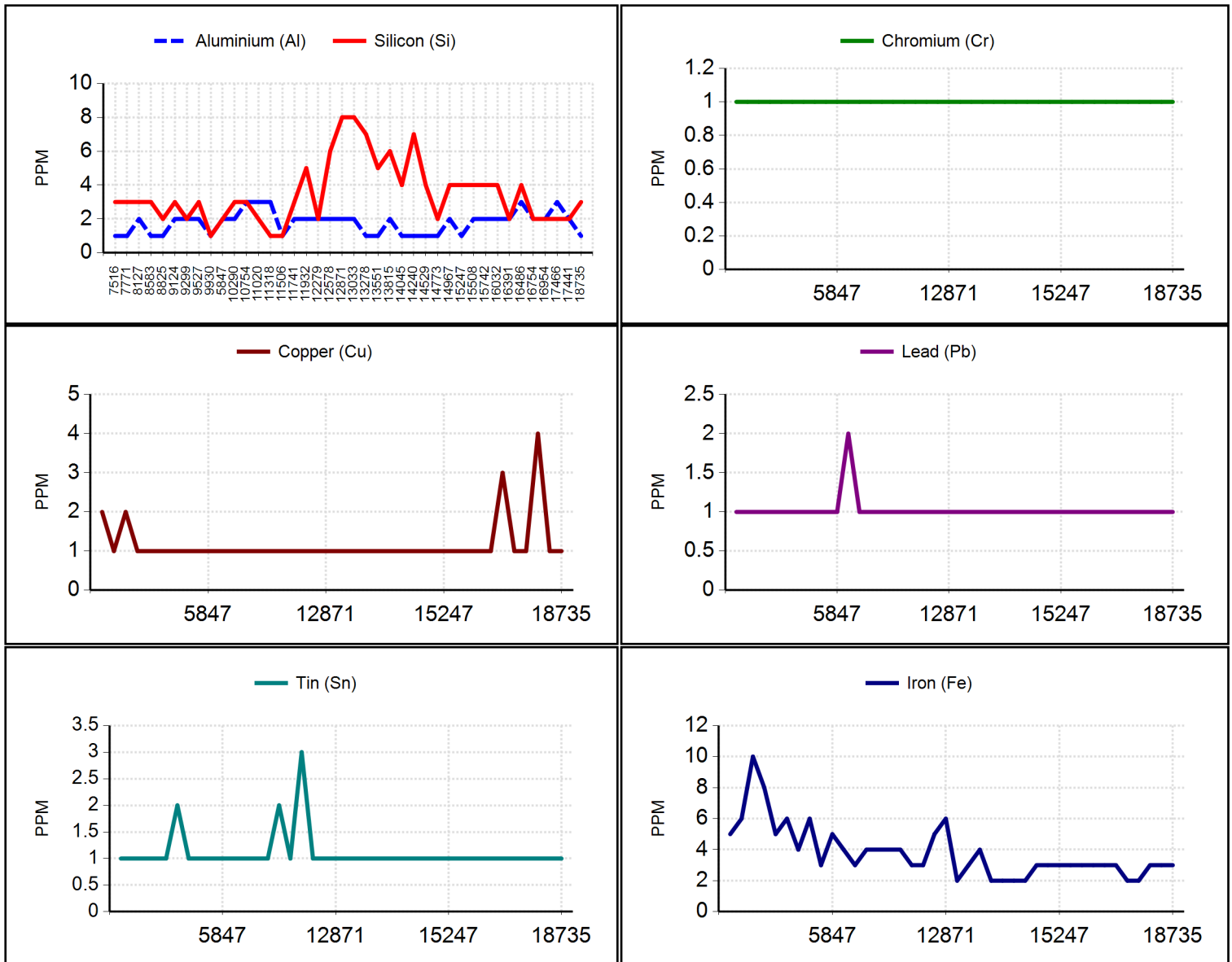
CURRENT Normal
SAMPLE
STATUS

UIN : 02E991F

		CURRENT	2	3	4	5
SAMPLE NO.		46491697	42697049	42698683	41757397	40752703
SAMPLED DATE		09-Aug-23	09-Dec-21	19-Aug-21	14-Dec-20	23-Oct-20
DATE RECEIVED		15-Aug-23	15-Dec-21	25-Aug-21	21-Dec-20	27-Oct-20
OIL MAKE		Rubia Works 4000	SAE	Total	Total	Total
OIL GRADE		SAE 15W40	SAE 15W40	SAE 15W40	SAE 15W40	SAE 15W40
MACHINE	Hrs	18735	17441	17466	16954	16754
COMPONENT	Hrs	18735	17441	17466	16954	16754
OIL	Hrs	50	250	466	204	250
OIL ADDED	Ltrs	0.0	0.0			
FILTER	Hrs	50	250	466	204	250
OIL CHANGED		Not Changed	Changed	Changed	Changed	Changed
WORK ORDER						
Metals (ppm)						
Aluminium (Al)		1	2	3	2	2
Copper (Cu)		1	1	4	<1	<1
Chromium (Cr)		<1	<1	<1	<1	<1
Iron (Fe)		3	3	3	2	2
Lead (Pb)		<1	<1	1	1	<1
Tin (Sn)		1	<1	1	<1	1
Contaminants (ppm)						
Silicon (Si)		3	2	2	2	2
Boron (B)		<5	7	58	26	59
Sodium (Na)		1	2	1	1	1
Potassium (K)		1	<1	1	<1	1
Phosphorus (P)		844	832	973	985	1072
Molybdenum (Mo)		<1	9	76	62	83
Magnesium (Mg)		8	9	40	638	17
Calcium (Ca)		2251	2120	2236	1446	2409
Zinc (Zn)		1010	992	1045	1138	1245
Physical Tests						
Water (%) (FTIR)		<0.1	<0.1	<0.1	<0.1	<0.1
Fuel (%)		2	1	1	1	1
Soot (%) (FTIR)		0.2	0.4	0.3	0.6	0.5
Viscosity (cSt,100°C)		12.5	12.6	12.6	12.4	12.7
Oxidation (Abs) (FTIR)		9.7	10.1	13.1	16.4	14.5
PQ Index		<10	<10	<10	<10	<10
Sulphation (Abs) (FTIR)		19.4	20.2	20.1	27.8	26.4
Total Base Number (FTIR)		6.7	7.0	7.4	7.7	8.2

DIAGNOSIS

All wear rates normal. Abrasive and other contaminant levels are acceptable. Viscosity within specified operating range. Action: Resample next recommended service interval to further monitor.



"This analysis report is dependent upon the accurate completion of the sample submission sheet and correct sampling techniques as advised. The analysis is intended as an aid only in predicting mechanical wear and should not be regarded as a substitute for proper servicing or mechanical inspection. The company does not accept any liability whatsoever in respect of any loss or damage (including loss of profits, economic or other consequential loss or damage) however caused which may arise directly, or indirectly, as a result of the matters referred to in this analysis report."



Hazell Bros Lund
 Attn: Steve Wilson
 Po Box 2135
 BURLEIGH BC QLD 4220

0053 v1.8

CJD Equipment Pty Ltd ABN 63 008 754 523

Head Office

Perth 54 Great Eastern Highway, Guildford WA 6055
 Ph (08) 9478 0000 FAX (08) 9477 6351
 Email enquiries@cjd.com.au Web www.cjd.com.au

Laboratory Sites:

Brisbane: 26 Shand Street Stafford Qld 4053

Ph: (07) 3326 6300 Fax: (07) 3326 6321

Perth: 109 Bannister Road, Canning Vale, WA 6155

Ph: (08) 9232 0400 Fax: (08) 9232 0499

Sydney: Unit 2/171-175 Newton Rd Wetherill Park NSW 2164

Ph: (02) 8786 3150 Fax: (02) 9725 5071

Singapore 121 Genting Lane #04-01 ALS Building
 Singapore 349572

Ph 65 6589 0118 Fax 65 6283 9699

New Zealand 74 Seaview Road, Lower Hutt, Wellington, NZ

5010

Ph: (64) 04 586 6202 Fax: (64) 04 586 6262



Blake Machinery Group Parts Pty Ltd
ABN: 43 603 200 835

327 Mons Rd
FOREST GLEN QLD 4556

Phone: 07 5445 4433
Email: accounts@blakemachinery.com.au
Website: https://blakemachinery.com.au/

TAX INVOICE

INVOICE NO.: 5478

Customer Code: 2-HAZE0001

Ship To:
Hazell Bros

Date: 30/03/2022

ABN:

P.O. No.: 1ME845

Invoice To:

Sales Rep.:

Hazell Bros
9 Bee Court
Burleigh Heads QLD 4220

Page 1 of 1

Item	Description	Qty.	Unit Price	Sales Value	GST	Amount
EXTLABOUR	External Labour - CJD to Calibrate Transmission	1.00	\$750.00	\$750.00	\$75.00	\$825.00
Texamatic 1888	Texamatic 1888	45.00	\$11.20	\$504.00	\$50.40	\$554.40
CONS-COOLANT SAF350	Green Coolant	25.00	\$5.25	\$131.25	\$13.13	\$144.38
A925057	SEAL O-RING	1.00	\$2.52	\$2.52	\$0.25	\$2.77
A977025	SEAL O-RING	2.00	\$3.04	\$6.08	\$0.61	\$6.69
G982193	O-Ring Seal	4.00	\$15.50	\$62.00	\$6.20	\$68.20
G982194	O-RING	2.00	\$15.58	\$31.16	\$3.12	\$34.28
A17430802	SEAL O-RING	2.00	\$4.85	\$9.70	\$0.97	\$10.67
EXTLABOUR	External Labour - R&I Transmission only and fir belly plates	57.00	\$105.00	\$5,985.00	\$598.50	\$6,583.50
CONS	Consumables	57.00	\$3.00	\$171.00	\$17.10	\$188.10

Notes:

Parts and labour to R&I transmission only and fit belly plates supplied by Hazell Bros.
Transmission oil and new coolant.
CJD to Calibrate Transmission.

Bank Account Details:

Account Name: Blake Machinery Group Parts
BSB: 084-801
Account No.: 908758196

For International Payments:

SWIFT Code: NATAAU3303M
Bank Name: NAB
Branch Address: Level 2, 12 Carnaby Street
Maroochydore QLD 4558

Sub Total: \$7,652.71

GST: \$765.28

Total: \$8,417.99

Payment Terms: Pay Immediately



Highway Tractor Spares Pty Ltd

5 Corio St
 Rockhampton QLD 4700
 Australia

Ph: +61 (0)3 9794 5355
 Fax: +61 (0)3 9792 5660
 Web: www.volspares.com.au
 ABN: 44 654 874 801

QUOTE

Quote: QBP3205

Date: 01/02/2022

Invoice To:

Hazell Brothers Group
 P O Box 430
 Moonah TAS 7009
 AUSTRALIA

Deliver To:

Hazell Brothers Group
 P O Box 430
 Moonah TAS 7009
 AUSTRALIA

Account: 00987 **Attention:** **From:** Peter Mason **Expiry:** 01/07/2022

Description: Quotation 01/02/22

Description	Quantity	Unit	Price	Extended
-------------	----------	------	-------	----------

A30E 12624

HEAT EXCHANGER	2.00	EA	2,000.00	4,000.00
O-RING	8.00	EA	13.41	107.27
TRANSMISSION CORE	1.00	EA	35,000.00	35,000.00

Sub Total :	39,107.27
GST :	3,910.73
Total :	\$43,018.00



UNIT 1ME 845 REGO No R50965					
Hazell Bros					
Machine :	A 30E				
Serial # :	VCE0A30EE000 12624				
Unit # :	1ME 845				
ENGINE Serial #	D9BABE3*166149	Engine 9.4 litres BHP 324 Kw 242			
	<u>Oil Type Conoco</u>	<u>TOTAL</u>	<u>CHANGING</u>	<u>Change Intervals</u>	
Crankcase	Power drive D 15w40		36 litres	250 Hours	
Trans	Mercon ATF		41 Litres	500 Hours	
Front Diff. inc hubs	Universal gearoil 75w-90		32 Litres	4000 Hours	
Middle Diff. inc hubs	Universal gearoil 75w-90		36 litres	4000 Hours	
Rear Diff. inc hubs	Universal gearoil 75w-90		32 Litres	4000 Hours	
Drop Box	Universal gearoil 75w-90		8.5 Litres	4000 Hours	
Hydraulics.			175 Litres	4000 Hours	
Coolant	Volvo CoolantVCS		71 Litres	6000 hours	
<u>Filters</u>	<u>BRAND VOLVO</u>		<u>Fleetguard</u>	<u>DONALDSON</u>	<u>Change Intervals</u>
Engine Bypass	Volvo 477556	1	LF 17502	P550425	250 Hours
Engine Lube	Volvo 478736	2	LF 17503	P550519	250 Hours
Engine Air (outer)	Volvo 11033996	1	AF 25619	P777868	1000 Hours
(inner)	Volvo 11033997	1	AF 25620	P777869	2000 Hours
Water Separator	Volvo 11110683	1	FS 19914	P550748	2000 Hours
Fuel Filter	Volvo 20976003	1	FF 254	P550529	500 Hours
Transmission	Volvo 11448509	2	HF 6553, HR6551	P164378	500 Hours
Hyd Fan Filter	Volvo 11707525	1		P566197	2000 Hours
Hydraulic Breathers	Volvo 11707077	1	AF 26455	P500196	1000 Hours
Hydraulic Filter	Volvo 17438620	1			2000 Hours
Diff Breathers	Volvo 11172907	3	AF 27819	P528708	2000 Hours
Drop Box Breather	Volvo 11172907	1	AF 27819	P528709	2000 Hours
Trans Breather	Volvo 11172907	1	AF 27819	P528710	2000 Hours
Fuel Tank Breather	Volvo 11707077	1	AF 26455	P500196	1000 Hours
Pre-cab Ventilation	Volvo 11703979	1	AF 26267	P500194	1000 Hours
Cab Ventilation	Volvo 11703980	1	AF 26384	P500195	2000 Hours
Breather Brake system	Volvo 11707077	1	AF 26455	P500196	2000 Hours
Air Dryer Filter Brake	Volvo 20424148	1			2000 Hours
Battery					
Fan Belts (Alternator)	Volvo 20441019				
(Air Con)	Volvo				

SERVICE

UNIT 1ME 845 REGO No R50965			NEXT SERVICE DUE
DATE	HOURS	SERVICE RECORDS AND REPAIRS	
11-Oct-12	5,664	MACHINE ARRIVED IN YARD FROM HIGHWAY TRACTOR SPARES . CARRY ENGINE SERVICE	
04-Dec-12	5,847	CARRY OUT 750 HOUR SERVICE	
04-Mar-13	6,030	CARRY OUT 1000 HOUR SERVICE	
11-May-13	6,295	CARRY OUT 250 HOUR SERVICE	
17-Jul-13	6,525	CARRY OUT 500 HOUR SERVICE	
27-Aug-13	6,739	CARRIED OUT 750 HOUR SERVICE ,RADIATOR FINS CLEANED OUT , OIL LEAKING FROM REAR MAIN SEAL	
	7,081	MACHINE IN TO CJD VOLVO FOR REAR MAIN SEAL REPLACEMENT. CJD VOLVO REMOVED ENGINE AND TRANSMISSION AS ONE UNIT ,TRANSMISSION SEPARATED FROM ENGINE TO EXPOSE SEAL . SEAL REPLACED AND MACHINE ASSEMBLED .CJD REPLACE PINION SEAL ON REAR DIFF . MACHINE RETURNED TO HAZELLBROS WORKSHOP WHERE 7000 SERVICE WAS CARRIED OUT . BONNET AND GRILL WERE PAINTED REVERSE CAMERA SYSTEM FITTED	
18-Dec-13			
15-Feb-14	7,240	CARRY OUT 250 HOUR SERVICE ,ADJUST BODY ALARM	
10-Apr-14	7,516	CARRIED OUT 500 HOUR SERVICE ,GENERAL CHECK OVER MACHINE	
10-Jul-14	7,771	MACHINE WAS IN YARD AFTER ROLL OVER , NEW PANELS FITTED DAMAGED AREAS PAINTED . 750 HOUR SERVICE CARRIED OUT	8000 HOURS
03-Nov-14	7,926	REPLACE BOTH BATTERIES	
23-Dec-14	8,127	CARRY OUT 8000 HOUR SERVICE	8250 HOURS
23-Feb-15	8,293	CARRY OUT 250 HOUR SERVICE	8500 HOURS
04-May-15	8,583	CARRY OUT 500 HOUR SERVICE , RADIATOR EXTERNAL CLEAN AND CHECK OVER AS PER OEM GUIDELINES	8750 HOURS
16-Jun-15	8,829	CARRY OUT 750 HOUR SERVICE . FOUND 2 BODY PADS MISSING WILL FIT NEXT SERVICE	9000 HOURS
24-Aug-15	9,124	CARRY OUT 9000 HOUR SERVICE . COMPLETE CHECK OVER OF MACHINE	9250 HOURS
01-Oct-15	9,299	CARRY OUT 250 HOUR SERVICE	9500 HOURS
01-Nov-15	9,326	TRANSMISSION , WOULD NOT SELECT GEARS , ,PRESSURE TESTED TRANSMISSION AND FOUND NOT OIL PRESSURE . DISCONNECTED TRANSMISSION FROM ENGINE AND HAD VOLVO ATTEND AND USING THEIR REMOVAL GEAR REMOVED TRANSMISSION , SENT TRANSMISSION TO VOLVO FOR REPAIR . FIT TRANSMISSION BACK TO MACHINE AND TESTED . MACHINE NOW OPERATING AS PER SPECIFICATION	
04-Jan-16	9,527	CARRY OUT 500 HOUR SERVICE , A NUMBER OF WINDOWS WERE BROKEN OVER THE XMAS BREAK , ALL WINDOWS HAVE NOW BEEN REPLACED	9750 HOURS
02-Mar-16	9,799	CARRY OUT 9750 HOUR SERVICE	10,000 HOURS
20-May-15	10,015	CARRY OUT 10,000 HOUR SERVICE	10250 HOURS
27-Jul-16	10,290	CARRY OUT 250 HOUR SERVICE	10,500 HOURS
28-Aug-16	10,339	REPAIR EXTERNAL DOOR HANDLE . OPERATOR COMPLAINED OF SHUDDER IN STEERING ,REMOVED AND INSPECTED ACCUMULATOR , GREASED ALL STEERING JOINTS , ASSEMBLED ACCUMULATOR AND TESTED MACHINE .FOUND ALL TO OPERATE CORRECTLY	
12-Oct-16	10,551	MACHINE WAS BROUGHT TO WORKSHOP AS HITCH WAS WORN . SEPARATED MACHINE AND FOUND TOP ARTICULATION PIN AND BEARING HAD FAILED ,TOP HOUSING WAS DAMAGED AND WAS LINE BORED . MACHINE WAS REASSEMBLED USING NEW TOP AND BOTTOM PINS ,BEARINGS ,SEALS AND SPACER. WHILST IN YARD MACHINE HAD 500 HOUR SERVICE AND FULL CHECK OVER	10,750 HOURS
11-Nov-16	10,754	CARRY OUT 10750 HOUR SERVICE . REPLACE UHF AERIAL ,TEST UHF ALL OK	11,000 HOURS
19-Jan-17	11,020	CARY OUT 11,000 SERVICE , REPLACED ALL DIFF BREATHERS ,CHANGED DROP BOX OIL , AIR CON APPEARS TO HAVE INTERMITTENT FAULT	11,250 HOURS
21-Jan-17	11,063	AIRCON SYSTEM WAS FOUND TO WORK ONLY WHEN TRUCK WAS USING HIGH REVS , FOUND COMPRESSOR WAS FAILING ,CHANGE OUT COMPRESSOR WITH NEW , REPLACED TX VALVE AND DRYER ,VAC SYSTEM AND RE GAS , TESTED SYSTEM ALL NOW OPERATIONAL	
04-Mar-17	11,318	CARRY OUT 250 HOUR SERVICE , REPLACED BRAKE LINE ON REAR AXEL , BLEW OUT RADIATOR AND COOLERS , LH REAR WHEEL SEAL LEAKING , REPAIRED LOAD AND DUMP BRAKE	11,500 HOURS
22-Apr-17	11,506	CARRY OUT 11500 HOUR SERVICE AND CHECK OVER OF MACHINE	11,750 HOURS
22-Jun-17	11,741	CARRY OUT 11741 HOUR SERVICE , FULL CHECK OVER OF MACHINE	12,000 HOURS
22-Jul-17	11,930	CARRY OUT12000 HOUR SERVICE , REPLACED FUEL FILTER HEAD AND OVERFLOW VALVE ,STILL NEED TO REPLACE DIFF AND DROP BOX OILS	12,250 HOURS
12-Aug-17	12,046	COMPLETE 12,000 HOUR SERVICE , REPLACE DIFF AND DROP BOX OILS	
21-Sep-17	12,279	CARRY OUT 12,250 HOUR SERVICE ,, REPLACE FAULTY REVERSE CAMERA AND MOUNTING BRACKET , HAS MINOR LEAK FROM COOLANT OVER-FLOW BOTTLE CAP - HAVE ORDERED PART WILL FIT WHEN IN STOCK	12,500 HOURS
15-Nov-17	12,578	CARRY OUT 500 HOUR SERVICE , REPLACE BONNET LIFT HOSE DUE TO SLIGHT WEEPING AROUND FITTING , ,NOTED MIDDLE AXLE AND LH REAR TYRES ARE GETTING LOW ON TREAD , A/C DRYER IS COVERED IN DUST SUGGESTING THERE MAY BE A SLOW LEAK ,WILL MONITOR SYSTEM	12,750 HOURS
25-Jan-18	12,885	CARRY OUT 750 HOUR SERVICE , CHECKED ALL DIFF LEVELS , NOTED LEAKING STRUT ON OPERATORS SEAT ,NEW STRUT HAS BEEN ORDERED	13,000 HOURS
28-Feb-18	13,033	CARRY OUT 13,000 HOUR SERVICE , FULL CHECK OVER OF MACHINE , REPLACE FAULTY BEACON , REPLACE FIRE EXTINGUISHER , REPLACED FAULTY AIR-CONDITIONING BUTTON	13,250 HOURS
23-Apr-18	13,278	CARRY OUT 13250 HOUR SERVICE , FULL CHECK OVER OF MACHINE , CHECK ALL TYRE PRESSURES AND TREAD ALL WITH SPEC	13,500 HOURS
09-Jun-18	13,500	CARRY OUT 13,500 HOUR SERVICE , REMOVE BRAKE PLATE TO INSPECT BRAKE LININGS , FULL CHECK OVER OF MACHINE	13,750 HOURS
27-Jul-18	13,815	CARRY OUT 13,750 HOUR SERVICE , REPLACE FIRE EXTINGUISHER , , CHECKED ALL TYRE PRESSURES TOPPED UP BRAKE FLUID BOTTLE , WIPER WASHER MOTOR FAULTY ,HAVE ORDER NEW ONE AND WILL FIT ONCE IN STOCK	14,000 HOURS
07-Sep-18	14,000	CARRY OUT 14,000 SERVICE , REPAIRED TAIL LIGHTS , CHANGE ALL OILS AND FILTERS , FULL CHECK OVER OF MACHINE	14,250 HOURS

SERVICE

16-Oct-18	14,240	CARRY OUT 14,250 HOUR SERVICE , FULL CHECK OVER OF MACHINE , CHECK ALL TYRE PRESSURES AND INSPECT TREAD	14.500 HOURS
08-Dec-18	14,529	CARRY OUT 14,500 HOURS , OPERATOR HAD NOTED THAT THE MACHINE WAS HARD TO START, HAD TO WIND OVER A NUMBER OF TIMES , FAULT WAS FOUND TO BE IN THE FUEL FILTER HOUSING , REPLACED HOUSING WITH NEW , REPLACE FIRE EXTINGUISHER FOR TAG AND TEST , BOTH MIDDLE AXLE TYRES ARE GETTING LOW	14,750 HOURS
26-Jan-19	14,774	CARRIED OUT 14,750 HOUR SERVICE , BLEW OUT RADIATOR AND AIR CON CONDENSER , CHECKED ALL TYRE PRESSURES AND GREASED DRIVE LINES , FULL CHECK OVER OF MACHINE	15,000 HOURS
15-Mar-19	14,967	CARRIED OUT 15,000 HOUR SERVICE ,FOOT VALVE FOR TRANSMISSION HAS MINOR AIR LEAK MINOR WATER LEAK ON ENGINE , PARTS HAVE BEEN ORDERED FOR BOTH ISSUES , NO OTHER FAULTS FOUND	15,250 HOURS
01-May-19	15,192	REPLACE LEAKING LH FRONT WHEEL SEAL , REPLACE LEAKING TRANS DRAIN VALVE , REPLACE THERMOSTAT LEAKING GASKET ,FLUSHED ALL BRAKE SYSTEM AND REPLACED WITH NEW BRAKE FLUID	
15-May-19	15,247	CARRIED OUT 15,250 HOUR SERVICE , REPLACED SEAT BELT , CARRIED OUT ENGINE VALVE REST AND ADJUSTMENT ,FULL CHECK OVER OF MACHINE NO FAULTS FOUND	15,500 HOURS
04-Jul-19	15,508	CARRY OUT 15,500HR SERVICE, BLOW OUT COOLERS, CLEAN FUEL FILTER HOUSING FOOT VALVE DIRT FOUND SUGGESTING BUILD UP IN TANK, WILL MONITOR	15,750 HOURS
14-Aug-19	15,669	SEDIMENT IN BOTTOM OF FUEL TANK CAUSING BLOCKAGES, CLEAN INSIDE OF TANK, BACK FLUSH FUEL LINES AND REPLACE FILTERS, REMOVE AND CLEAN FUEL PICK UP, REFILL TANK, OPERATOR TO MONITOR	
24-Aug-19	15,773	OPERATOR NOTED THAT THE TRANSMISSION HAD A VERY HARSH CHANGE PATTERN , VOLVO WAS ENGAGED TO PUT THEIR LAPTOP ON MACHINE AND RECALIBRATE TRANSMISSION CHANGING , TESTED MACHINE ALL NOW WORKS AS PER SPECIFICATIONS	
27-Aug-19	15,742	CARRY OUT 15,750 SERVICE ,WALKING BEAM RUBBERS ARE VERY WORN AND WILL NEED REPLACING SHORTLY , NO OTHER FAULTS FOUND	16,000 HOURS
03-Oct-19	15,945	REPLACED EXHAUST MANIFOLD GASKETS AND STUDS	
15-Nov-19	16,032	CARRY OUT 16,000 HOUR SERVICE AND INSPECTION OF DUMPER ,FOUND BONNET JACK MISSING ,FOUND BRAKE FLUID BOTTLE LEAKING , PARTS HAVE BEEN ORDERED , BLEW OUT COOLERS AND REPLACED FIRE OUT OF TEST FIRE EXTINGUISHER	16,250 HOURS
14-Jan-20	16,199	OPERATOR NOTED THAT THE BRAKES HAD FAILED . INSPECTED THE BREAKING SYSTEM AND FOUND THAT TWO BRAKE PIPES WERE LEAKING , REPLACE STEEL PIPES WITH BRAKE HOSE , REFILL BRAKE RESERVOIR AND TESTED BRAKE SYSTEM , ALL NOW WORKING AS PER OEM GUIDELINES	
25-Feb-20	16,391	CARRIED OUT 16,250 HOUR SERVICE , NOTED THAT ENGINE DIPSTICK WAS NOT FITTED CORRECTLY BACK INTO POSITION WHICH MAY CAUSE HIGH SILICONE IN THE OIL SAMPLE , NEEDS NEW STEERING WHEEL COVER , TOPPED UP BRAKE FLUID BOTTLES ,REPAIRED AIR LEAK IN SEAT , LUBED UP ISOLATOR SWITCH WHICH WILL NEED REPLACING SHORTLY	16,500 HOURS
02-Apr-20	16,486	CARRY OUT 16,500 HOUR SERVICE . REPLACED FAULTY ISOLATED SWITCH , REPLACED LEAKING BRAKE FLUID RESERVOIR, OPERATOR NOTED THAT REVERSE CAMERA WAS NOT WORKING ALL THE TIME ,COULD NOT FIND A FAULT WITH CAMERA OPERATION	16,750 HOURS
23-Oct-20	16,754	CARRIED OUT 16,750 HOUR SERVICE AND INSPECTION OF DUMP TRUCK ,FOUND RH MIDDLE BODY PAD MISSING , BOTH BRAKE BOTTLES AT BACK OF CAB ARE LEAKING , WILL EXTEND BREATHER ON BOTH BOTTLES TO RECTIFY LEAK	17,000 HOURS
14-Dec-20	16,954	CARRIED OUT 17,000 HOUR SERVICE AND INSPECTION OF TRUCK, REPLACED ALL OILS AND FILTERS EXCEPT HYDRAULIC OIL, SAMPLED ALL COMPARTMENTS INCLUDING DIFFS. NO FAULTS FOUND	17,250 HOURS
23-Apr-21	17,258	CARRIED OUT 17,250 SERVICE AND INSPECTION OF DUMP TRUCK.	17,500 HOURS
19-Aug-21	17,466	CARRIED OUT 17,500 HOUR SERVICE AND INSPECTION OF DUMP TRUCK HAD TO TOP UP BRAKE FLUID BOTTLES , FITTED NEW ISOLATOR , FITTED NEW SHIFT LEAVER COVER	17,750 HOURS
09-Dec-21	17,741	CARRIED OUT 750HRS SERVICE AND INSPECTION,GREASE MACHINE, TOP UP TRANSMISSION OIL,FIT NEW NUMBER PLATE,TOP UP COOLANT	18,000 HOURS
	17,786		
23-Dec-21		MACHINE ARREIVED IN YARD WITH REPORTED NOT SHIFING GEARS. CJD CARRY OUT TESTS AND PERFORM CALIBRATION. SPEED SENSOR TEST OK. DIAGNOSE INTERNAL TRANSMISSION FAULT. HAZELL BROS FITTER REOVE BELLY PLATES AND STRAINER, FOUND CLUTCH PACK MATERIAL. TRUCK SENT TO BLAKE MACHINERY FOR TRANSMISSION REMOVAL.	18,000 HOURS
	17,786		
28-Mar-22		HIGHWAY TRACTOR SPARES PROVIDE REBUILT EXCHANGE TRANSMISSION, BLAKE MACHINERY FIT REBUILT TRANSISSION BACK INTO TRUCK, CJD PERFORM CALIBRATION. ALL T	18,000 HOURS
10-Jun-22	17,941	CARRIED OUT 18,000HR SERVICE AND INSPECTION,ALL TYRES IN GOOD CONDITION, NO LEAKS.	18,250 HOURS
18-Oct-22	18,263	CARRIED OUT 18,250HR SERVICE AND INSPECTION,ALL TYRES IN GOOD CONDITION.	18,500 HOURS
16-Nov-22	18,337	MACHINE WAS BROUGHT BACK TO THE WORKSHOP DUE TO A REPORTED BRAKE ISSUE, INVESTIGATION FOUND THAT THERE WAS 4 MASTER CYLINDERS THAT HAD BEEN LEAKING AND COURSING THEM TO OVER STROKE, ALL 4 WERE REPLACED AND BLED UP. CJD WHERE CALL OUT TO ALSO INVESTIGATE THE BRAKE COMPLANT, THEY ADVISED US TO CHANGE ALL BRAKE PADS ON THE MACHINE AND CONTINUE TO BLEED THE SYSTEM TO REDUSE THE OVER STROKE UNDER 42MM AS PER SPECIFICATION. ALL MASTER CYLINDERS ARE NOW UNDER 42MM AND WORKING CORRECTLY BAR ONE. THE FRONT AXLE LEFT IS 45MM SLIGHTLY OVER SPEC, ALL THE OVER STROKE HARNESSSES WHERE RE-CONNECTED AND ARE ALL WORKING CORRECTLY, A STALL TEST WAS CARRIED OUT SEVERAL TIMES AND THE BRAKES ARE HOLDING AT 1350RPMS. NO OVER STROKE ALARM GOING OFF, BRAKES RESTORED BACK TO THE OEM SPECS. MACHINE WHEN BACK TO WORK ON THE 23/11/22	18,500 HOURS
	18,573		
06-Feb-23		MACHINE WAS BROUGHT BACK TO THE WORKSHOP WITH 2 WHEEL SEALS LEAKING, REPLACE BOTH LHR AND RHF WHEEL SEALS AND BLEED BRAKES, BLOW OUT BLOCKED RADIATOR AND AFTERCOOLER, CARRIED OUT 500HR SERVICE AND INSPECTION, REPLACE FRONT DIFF OIL, CHECK ALL TYRE PRESSURE AND ADJUST TO 50PSI, WAS MACHINE AND REGAS THE AIR CON, REPLACE BOTH WALKING BEAM RUBBERS.	18,750 HOURS
06-Apr-23	18,735	CARRIED OUT 18,750 HRS SERVICE AND INSPECTION, TOP UP HYD OIL	19,000 HOURS