

Programmed Oil Sampling

CLIENT NAME
HAZELL BROS LUND
CLIENT ADDRESS
9 Bee Court
Burleigh QLD 4220

MAKE Volvo
MODEL A30E
SERIAL No. VCEA30EE00012624
UNIT No. IME845
COMPARTMENT TYPE Diesel Engine
COMPARTMENT NAME Diesel Engine
MACHINE LOCATION Brisbane Port.
SYSTEM CAPACITY 40.0 Ltrs

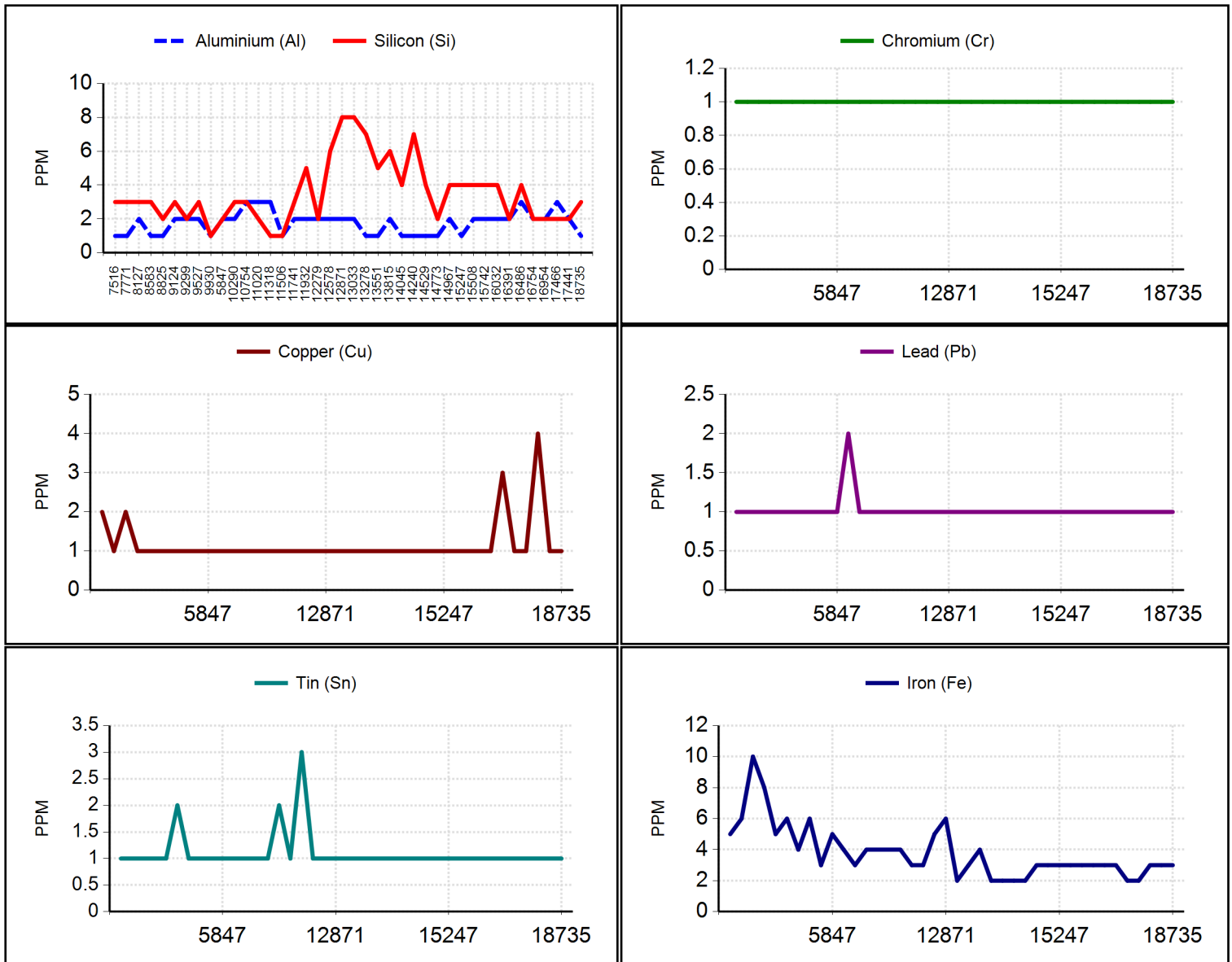
CURRENT Normal
SAMPLE
STATUS

UIN : 02E991F

		CURRENT	2	3	4	5
SAMPLE NO.		46491697	42697049	42698683	41757397	40752703
SAMPLED DATE		09-Aug-23	09-Dec-21	19-Aug-21	14-Dec-20	23-Oct-20
DATE RECEIVED		15-Aug-23	15-Dec-21	25-Aug-21	21-Dec-20	27-Oct-20
OIL MAKE		Rubia Works 4000	SAE	Total	Total	Total
OIL GRADE		SAE 15W40	SAE 15W40	SAE 15W40	SAE 15W40	SAE 15W40
MACHINE	Hrs	18735	17441	17466	16954	16754
COMPONENT	Hrs	18735	17441	17466	16954	16754
OIL	Hrs	50	250	466	204	250
OIL ADDED	Ltrs	0.0	0.0			
FILTER	Hrs	50	250	466	204	250
OIL CHANGED		Not Changed	Changed	Changed	Changed	Changed
WORK ORDER						
Metals (ppm)						
Aluminium (Al)		1	2	3	2	2
Copper (Cu)		1	1	4	<1	<1
Chromium (Cr)		<1	<1	<1	<1	<1
Iron (Fe)		3	3	3	2	2
Lead (Pb)		<1	<1	1	1	<1
Tin (Sn)		1	<1	1	<1	1
Contaminants (ppm)						
Silicon (Si)		3	2	2	2	2
Boron (B)		<5	7	58	26	59
Sodium (Na)		1	2	1	1	1
Potassium (K)		1	<1	1	<1	1
Phosphorus (P)		844	832	973	985	1072
Molybdenum (Mo)		<1	9	76	62	83
Magnesium (Mg)		8	9	40	638	17
Calcium (Ca)		2251	2120	2236	1446	2409
Zinc (Zn)		1010	992	1045	1138	1245
Physical Tests						
Water (%) (FTIR)		<0.1	<0.1	<0.1	<0.1	<0.1
Fuel (%)		2	1	1	1	1
Soot (%) (FTIR)		0.2	0.4	0.3	0.6	0.5
Viscosity (cSt,100°C)		12.5	12.6	12.6	12.4	12.7
Oxidation (Abs) (FTIR)		9.7	10.1	13.1	16.4	14.5
PQ Index		<10	<10	<10	<10	<10
Sulphation (Abs) (FTIR)		19.4	20.2	20.1	27.8	26.4
Total Base Number (FTIR)		6.7	7.0	7.4	7.7	8.2

DIAGNOSIS

All wear rates normal. Abrasive and other contaminant levels are acceptable. Viscosity within specified operating range. Action: Resample next recommended service interval to further monitor.



"This analysis report is dependent upon the accurate completion of the sample submission sheet and correct sampling techniques as advised. The analysis is intended as an aid only in predicting mechanical wear and should not be regarded as a substitute for proper servicing or mechanical inspection. The company does not accept any liability whatsoever in respect of any loss or damage (including loss of profits, economic or other consequential loss or damage) however caused which may arise directly, or indirectly, as a result of the matters referred to in this analysis report."



CJD Equipment Pty Ltd ABN 63 008 754 523

Head Office

Perth 54 Great Eastern Highway, Guildford WA 6055
 Ph (08) 9478 0000 FAX (08) 9477 6351
 Email enquiries@cjd.com.au Web www.cjd.com.au

Laboratory Sites:

Brisbane: 26 Shand Street Stafford Qld 4053

Ph: (07) 3326 6300 Fax: (07) 3326 6321

Perth: 109 Bannister Road, Canning Vale, WA 6155

Ph: (08) 9232 0400 Fax: (08) 9232 0499

Sydney: Unit 2/171-175 Newton Rd Wetherill Park NSW 2164

Ph: (02) 8786 3150 Fax: (02) 9725 5071

Singapore 121 Genting Lane #04-01 ALS Building
 Singapore 349572

Ph 65 6589 0118 Fax 65 6283 9699

New Zealand 74 Seaview Road, Lower Hutt, Wellington, NZ

5010

Ph: (64) 04 586 6202 Fax: (64) 04 586 6262

Hazell Bros Lund
 Attn: Steve Wilson
 Po Box 2135
 BURLEIGH BC QLD 4220