

**1999 CAT**  
**992G**  
WHEEL LOADER

---

**Inspection Type:** Marketing  
**Inspection Form:** Standard  
**Inspection #:** 10156477  
**Inspection Status:** INSPECTED  
**Created:** 10/16/24 03:18:44  
**Updated:** 10/16/24 04:16:42  
**Created By:** Vanden Wouwer, Hans  
**Inspector:** Vanden Wouwer, Hans

---

[Richter Severity Report](#)

[Accessory Kits - Compact Wheel Loaders](#)

[Accessory Kits - Small Wheel Loaders](#)

[SIMSi Product Configuration](#)

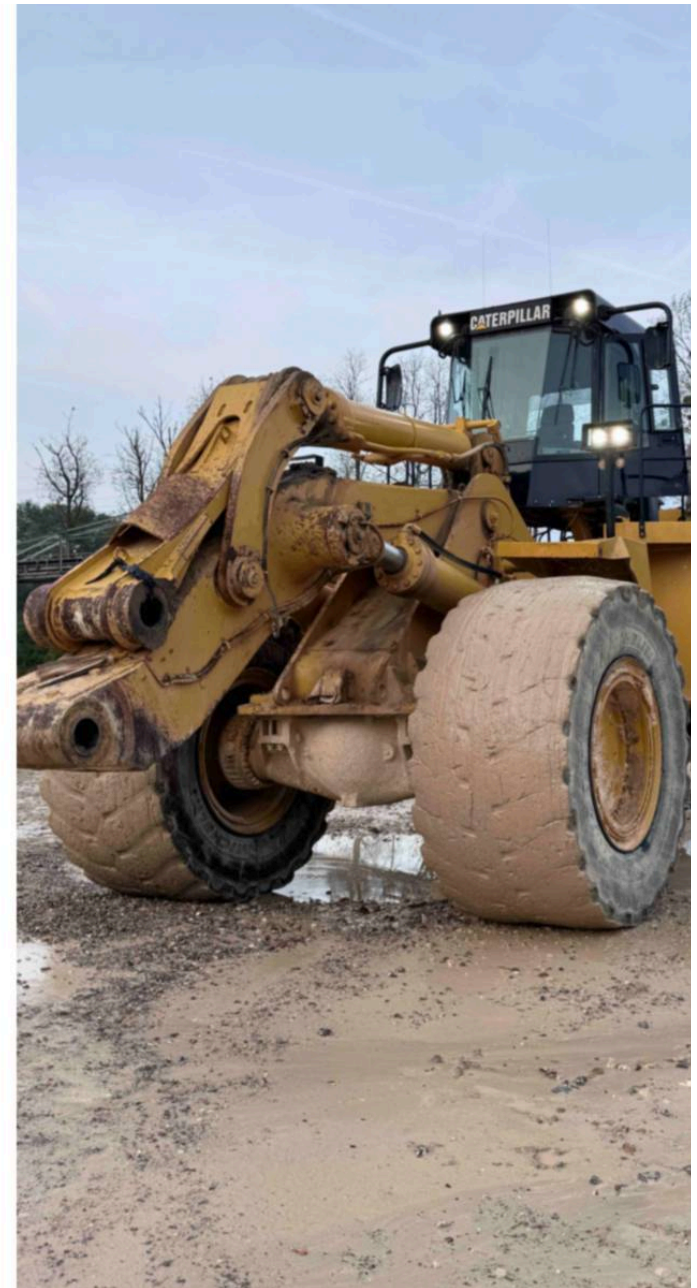
[SIMSi Sales & Service History](#)

[SIMSi Customer Information \(English only\)](#)

[Open PIP / PSP Programs](#)

**Serial #:** 7HR00373  
**SMU / Hours:** 40,843

---





CLIENT

FEATURES

CONDITION

●●● Good ●● Fair ● Poor

Approved Repair

[-] Collapse All

[-] GENERAL CONDITION

●●● Body

●●● Frame

YES Logged / Active Codes

YES Machine Starts and is Operable

YES Visible Oil Leaks

[-] GENERAL APPEARANCE

●●● Bumper

●●● Cab or Canopy

●●● Counterweight

●●● Crankcase Guard / Battery Box

●● Eng. Enclose Hood / Stack  
Door won't close anymore

●●● Fenders

●●● Fiberglass

●●● Front Frame

●●● Fuel Tank

●●● Grab Irons

●●● Guards / Screens

●●● Paint

●●● Plastic

●●● Pre-Cleaner Bowl

●●● Radiator Grill & Shroud

●●● Rear Frame

●●● Sheet Metal

●●● Steps / Ladder

NO Cleaning Required

**— SAFETY ITEMS**



Back Up Alarm



Fire Extinguisher



Horn



Rig Saver



ROPS



Seat Belt / Date



Secondary Exit

**YES**

Parking Brake Functioning

**YES**

Service Brakes Functioning

**— OPERATOR STATION**



Air Conditioner



Armrests



Cab Filter / Heat Vent Louvres



Dash Console



Door Latches / Hinges / Seals



Floor Boards / Mats  
Worn-out



Gauges



Headliner



Heater / Defroster



Hour Meter - GAUGES,  
OPERATION STATION,  
CONSOLE



Hydraulic Controls



Interior Lights



Interior Plastic / Fabric



Mirrors



Monitoring Display



Pans/Guards



Radio



Seat Cushions / Suspension /  
Type



Switches



Transmission Controls



Visor / Sunshade



Windows



Windshield Wipers

**YES**

Sound Proofing

---

**— ENGINE**

Belts / Pulleys - ENGINE



Engine Oil Level / Condition



Engine Supports / Mounts



Exhaust / Muffler / Stack



Fuel Injection System



Governor



Intake / Air Filters



Operating Condition - ENGINE



Turbocharger / Blower

**NO**

Blow By

**YES**

Fuel Leaks

**YES**

Has Engine been rebuilt?

**NO**

Knocking

**NO**

Oil Leaks

**NO**

Water in Oil

---

**— EMISSIONS**

Notes - EMISSIONS

Irrelevant

---

**— COOLING SYSTEM**Anti-Freeze Level / Color /  
Condition

Coolers



Fan



Fan Drive / Type



Fan Shrouds / Guards



Hoses / Tubes



Radiator



Water Pump

**NO**

Compression in Radiator

**YES**

Coolant Leaks

**YES**

Oil in Anti-Freeze

**YES**

Standard Radiator

---

**— ELECTRICAL, STARTING AND CHARGING SYSTEM**



Alternator



Batteries / Cables / Master Disconnect



Beacon / Strobe



Product Link / Condition



Starter / Type



Wiring



Work Lights

**YES**

Ether Aid

**YES**

Jump Start Terminal

**— TRANSMISSION**



Case



Controls - TRANSMISSION



Cooler



Drive Shaft



Leaks - TRANSMISSION  
Leaks under converter



Lines / Fittings - TRANSMISSION



Operating Condition - TRANSMISSION



Pump - TRANSMISSION



Temp / Pressure Gauges



Torque Converter - TRANSMISSION



Transmission



Transmission - Forward Shifts



Transmission - Reverse Shifts



Universal Joints - TRANSMISSION

**NO**

Mag Screens Checked

**NO**

Transmission - Noisy

**— STEERING**



Articulate P & B



Lines / Fittings - STEERING



Pumps



Steering Cylinder



Steering Linkage



Steering Valves / Pumps



Supplemental Steer



Valves

**— BRAKE**

- |     |                       |     |               |     |                      |
|-----|-----------------------|-----|---------------|-----|----------------------|
| ●●● | Accumulator           | ●●● | Accumulators  | ●●● | Brake Drums / Rotors |
| ●●● | Brake Linkage         | ●●● | Control Valve | ●●● | Hydraulic Pumps      |
| ●●● | Leaks - BRAKE         | ●●● | Lines         | ●●● | Lines / Tubes        |
| ●●● | Parking Brake - BRAKE | ●●● | Pedal         | ●●● | Pump - BRAKE         |
| ●●● | Type (Wet, Dry)       |     |               |     |                      |

**YES** Holds In Park

**NO** Leaks - BRAKE

**— HYDRAULICS**

- |     |                                   |     |                            |     |                 |
|-----|-----------------------------------|-----|----------------------------|-----|-----------------|
| ●●● | Accumulator Charge - Ride Control | ●●● | Bucket & Hoist Kickout     | ●●● | Control Linkage |
| ●●● | Hose Lines                        | ●●● | Hoses & Tubes - HYDRAULICS | ●●● | Lift Cylinders  |
| ●●● | Overall Operating Condition       | ●●● | Pumps & Valves             | ●●● | Tank            |
| ●●● | Tilt Cylinder                     |     |                            |     |                 |

**NO** Leaks - HYDRAULICS

**— BUCKET**

- |     |               |     |               |     |                         |
|-----|---------------|-----|---------------|-----|-------------------------|
| ●●● | Bucket Bottom | ●●● | Bucket Floor  | ●●● | Bucket Linkage - BUCKET |
| ●●● | Bucket Sides  | ●●● | Cutting Edges | ●●● | Loader Frame            |

●●● Loader Pins & Bushings

●●● Teeth / Adapters

**YES** Standard Lift

**- FINAL DRIVES**

●●● Differentials

●●● Front Axle

●●● Front Final Drives

●●● Oscillation

●●● Rear Axle

●●● Rear Final Drives

●●● Wheel Lugs & Rims - FINAL DRIVES

**NO** Leaks - FINAL DRIVES

**- TIRES**

	Make / Serial#	Tread Depth in 1/32"	% Life Remaining	Recapped	Tread Cuts/Chunks	Side Cuts Section
Left Front	Michelin			<b>NO</b>	<b>NO</b>	<b>NO</b>
Left Rear	Michelin			<b>NO</b>	<b>NO</b>	<b>NO</b>
Right Front	Michelin			<b>NO</b>	<b>NO</b>	<b>NO</b>
Right Rear	Michelin			<b>NO</b>	<b>NO</b>	<b>NO</b>

**NO** Spare

**- COMMENTS, MISC. REPAIRS, GENERAL REMARKS**

comment 1  
Machine in working condition